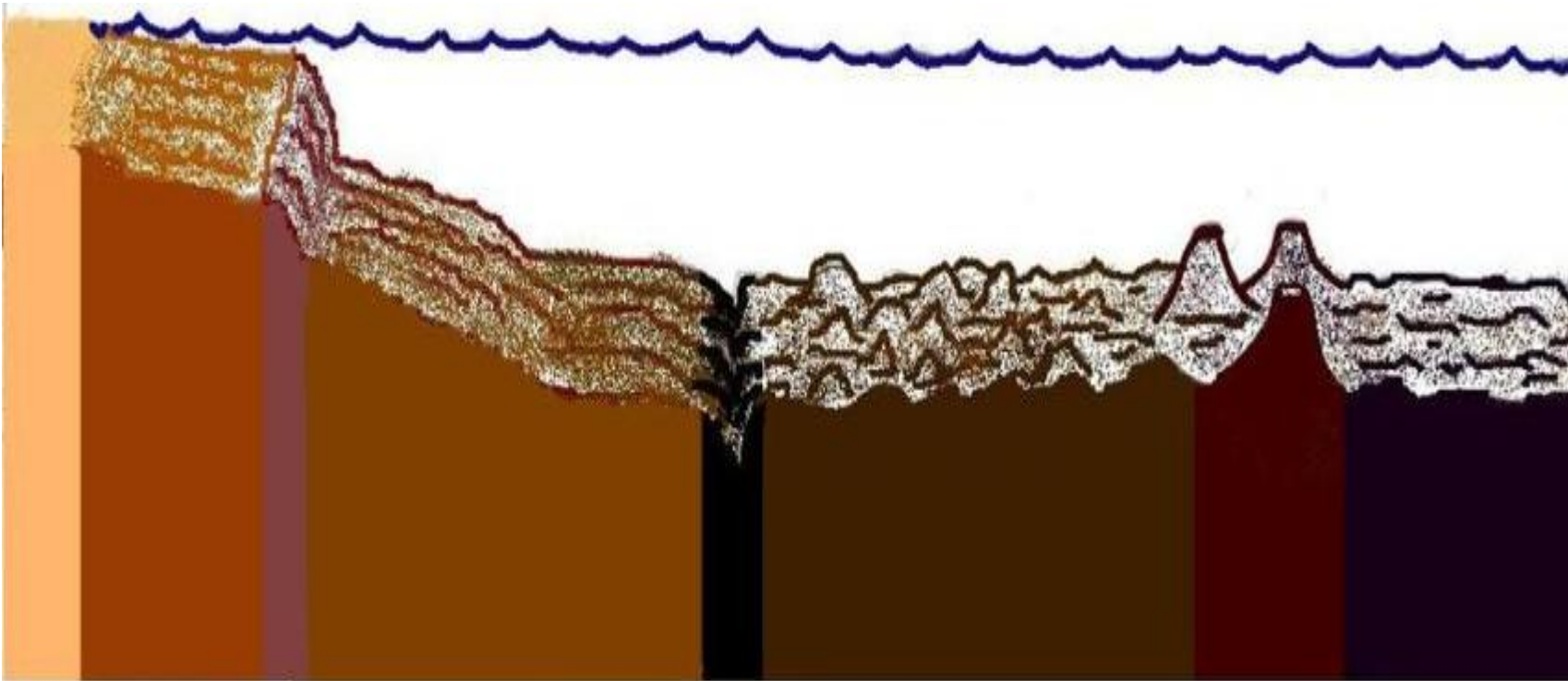
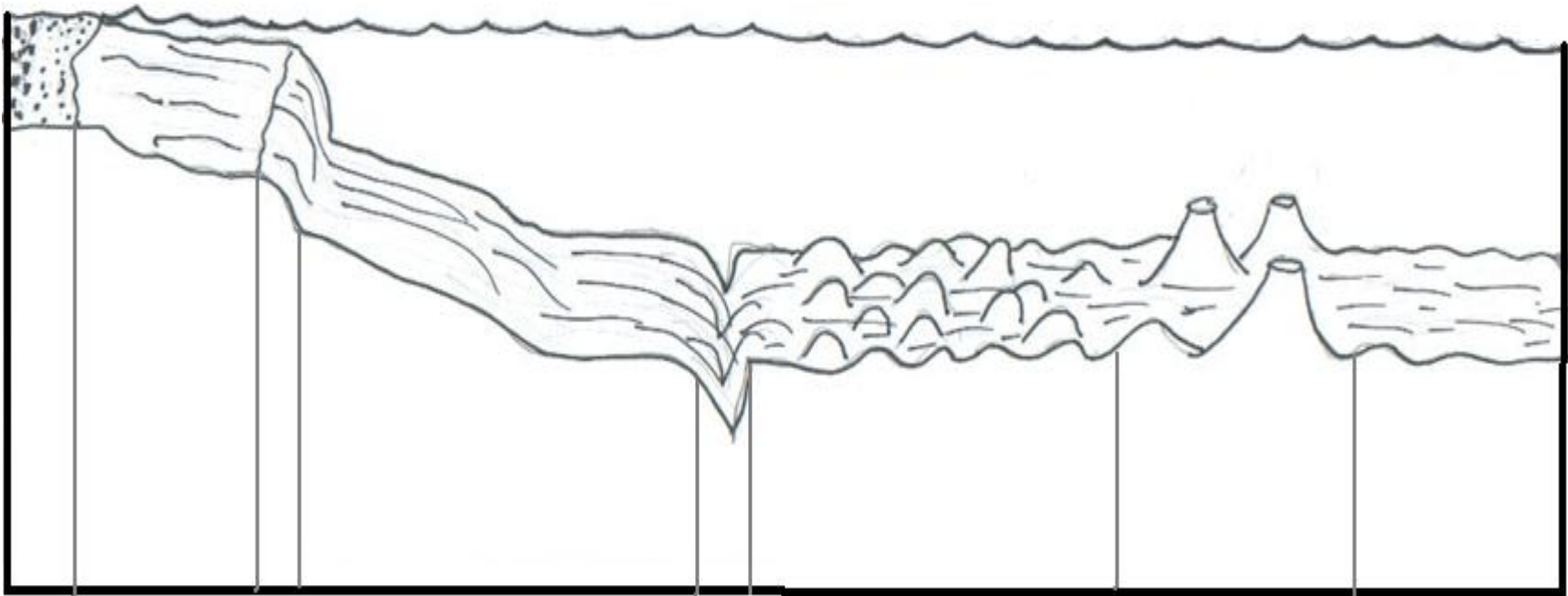


Identify the parts of the ocean floor.

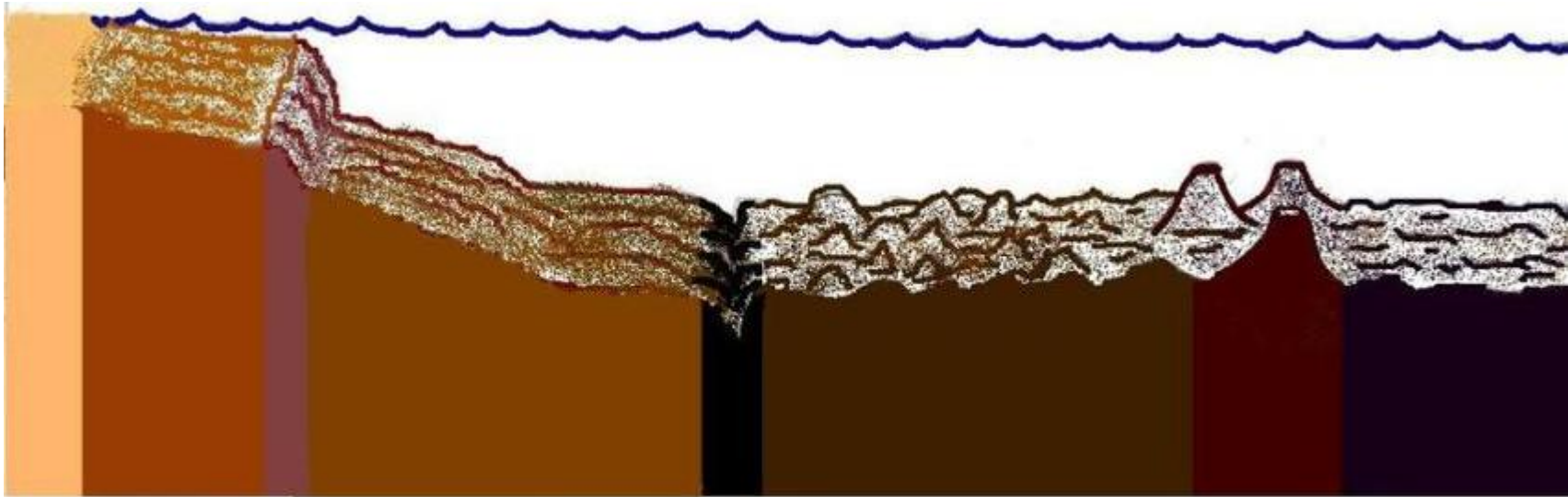


Identify the parts of the ocean floor.



Identify the parts of the ocean floor.

Make a clay model of the ocean floor. Include the continental shelf, continental slope, continental rise, ocean trenches, underwater mountain ranges, underwater volcano, and abyssal plains.



Abyssal Plain
Flattest part of the ocean floor

Underwater Volcano
May form islands

Underwater Mountain
Form long, underwater ranges

Ocean Trench
The border of one tectonic plate is below another plate margin.

Continental Rise
Lined with layers of sediments from the continents

Continental Slope
Becomes very dark

Continental Shelf
Sandy, lots of sea life

Oceanography 3 Information Pieces

Continental Shelf 0-3	Sandy, lots of sea life 0-3
Continental Slope 0-3	Becomes very dark 0-3
Continental Rise 0-3	Lined with layers of sediments from the continents. 0-3
Abyssal Plain 0-3	Flattest part of the ocean floor 0-3
Ocean Trench 0-3	The border of one tectonic plate is below another plate margin. 0-3
Underwater Mountain Range 0-3	Form long, underwater ranges 0-3
Underwater Volcano 0-3	May form islands 0-3

To Make Your MatchCard more durable:

- 1. Put the student MatchCard and instructor MatchCard back to back in a clear plastic page protector.*
- 2. Laminate the information pieces. Or you can make them sturdier by covering the paper with transparent tape prior to cutting the pieces out.*
- 3. For more ideas on how to use the MatchCards, and for keeping a notebook for review, see the Instructor's Guide.*