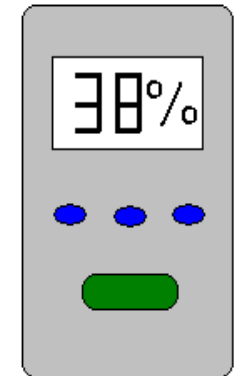
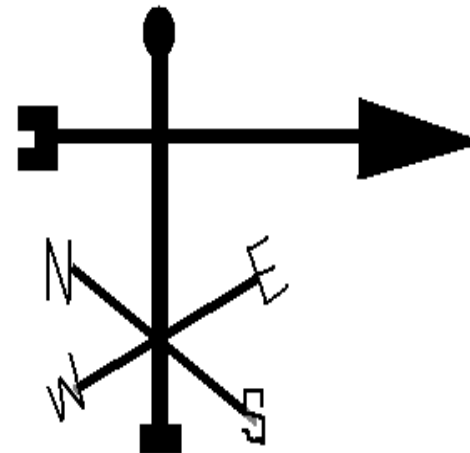
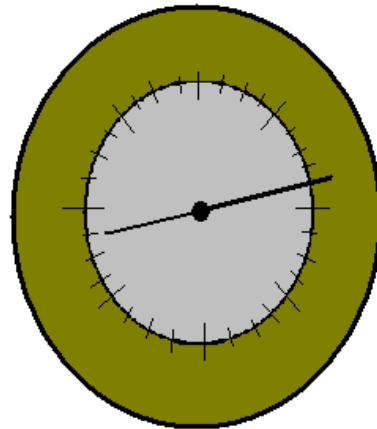
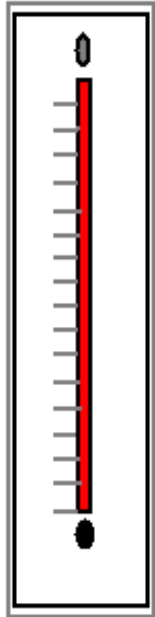
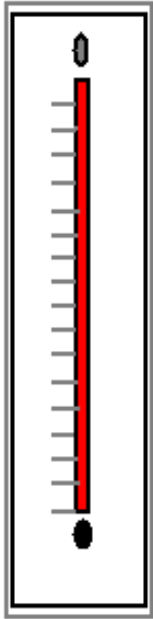


Determine weather conditions with the use of thermometers, barometers, weather vanes, and hygrometers.

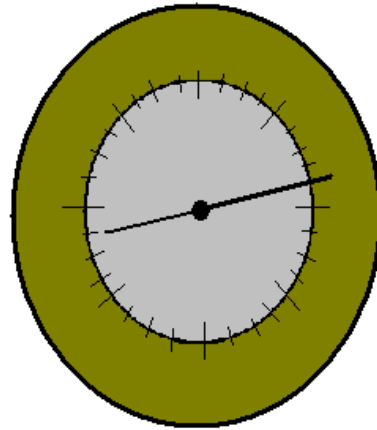


Determine weather conditions with the use of thermometers, barometers, weather vanes, and hygrometers.



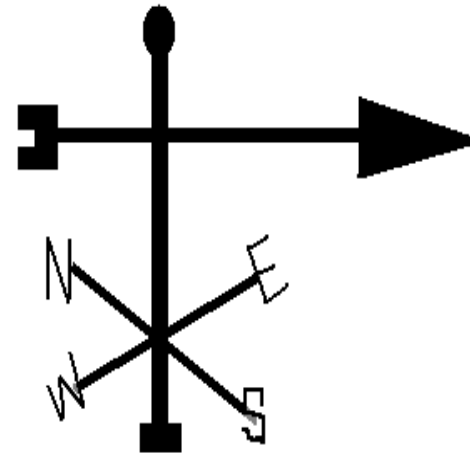
Thermometer

Measures the heat in the shade.



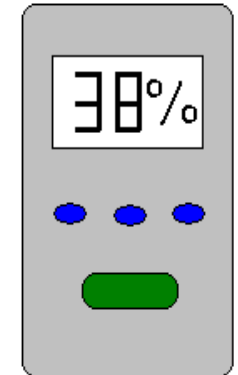
Barometer

Measures the air pressure



Weather Vane

Tells the wind direction



Hygrometer

Measures the amount of moisture in the air

Use a thermometer to measure heat, a barometer to measure air pressure, weather vane to determine wind direction and strength, and hygrometer to measure moisture in the air. Keep a daily chart. Compare your findings with the local weather report.

Information Pieces

Thermometer W-5
Barometer W-5
Weather Vane W-5
Hygrometer W-5
Measures the heat in the shade. W-5
Measures the air pressure. W-5
Tells the wind direction W-5
Measures the amount of moisture in the air. W-5

To Make Your MatchCard more durable:

- 1. Put the student MatchCard and instructor MatchCard back to back in a clear plastic page protector.*
- 2. Laminate the information pieces. Or you can make them sturdier by covering the paper with transparent tape prior to cutting the pieces out.*
- 3. For more ideas on how to use the MatchCards, and for keeping a notebook for review, see the Instructor's Guide.*