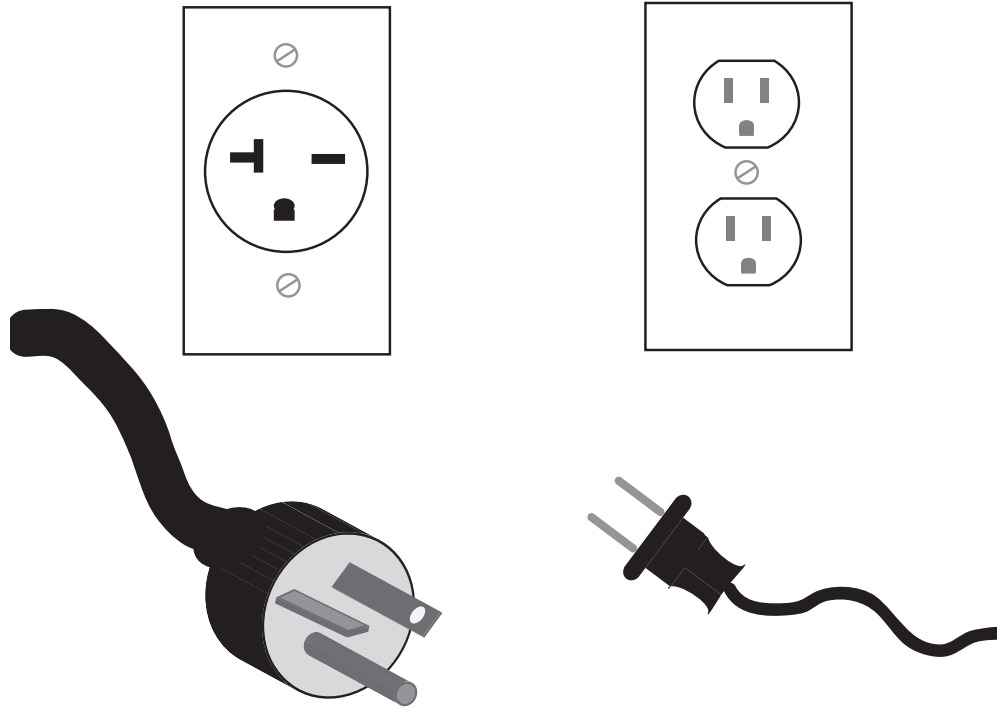


Define watts, amperage, and voltage.



Quantity of Electrons*	X	Force of Flow	=	Power
	X		=	
	X		=	

Usually measured in coulombs per second  
 One coulomb equals 6,250,000,000,000,000 electrons

## Light & Energy Information Pieces

<b>AMPS</b> LE-11
<b>VOLTAGE</b> LE-11
<b>WATTS</b> LE-11
<b>Current or Rate of Flow</b> LE-11
<b>Amount of Power or Force</b> LE-11
<b>Amount of Electricity Used</b> LE-11

To Make Your **MatchCard** more durable:

1. Put the student MatchCard in a clear plastic page protector.
2. Laminate the information pieces. You can also make them sturdier by covering the paper with transparent tape prior to cutting the pieces out.
3. For more ideas on how to use the Match-Cards, and for keeping a notebook for review, see the Instructor's Guide.
4. The Complete Light & Energy Unit Study provides the student worksheets, answer key, and teaching activities for this and 15 other objectives. See the website for more information.