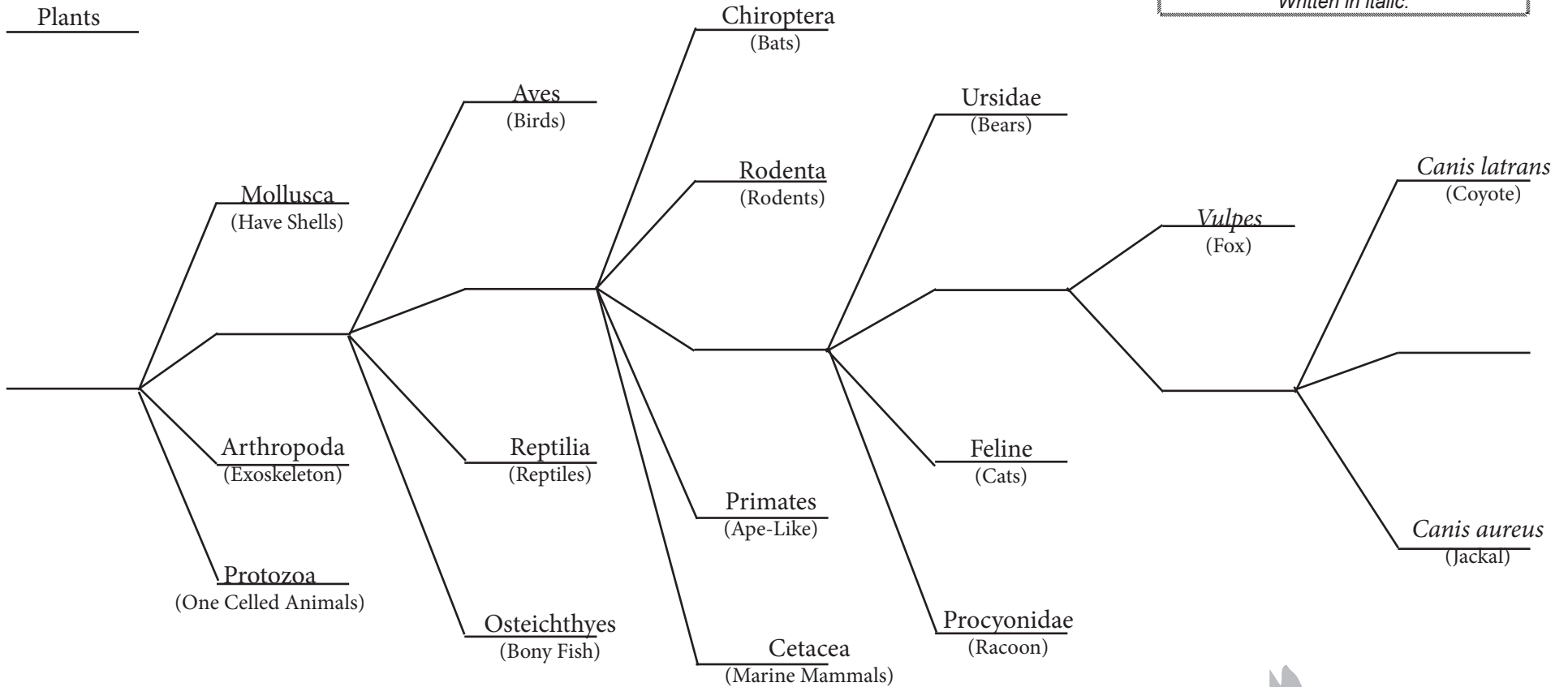


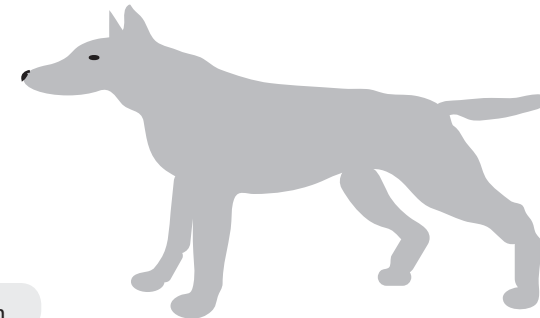
List the major groups used to classify plants and animals from the broadest to the most specific.

Used in the scientific name.
Written in *italic*.

Plants



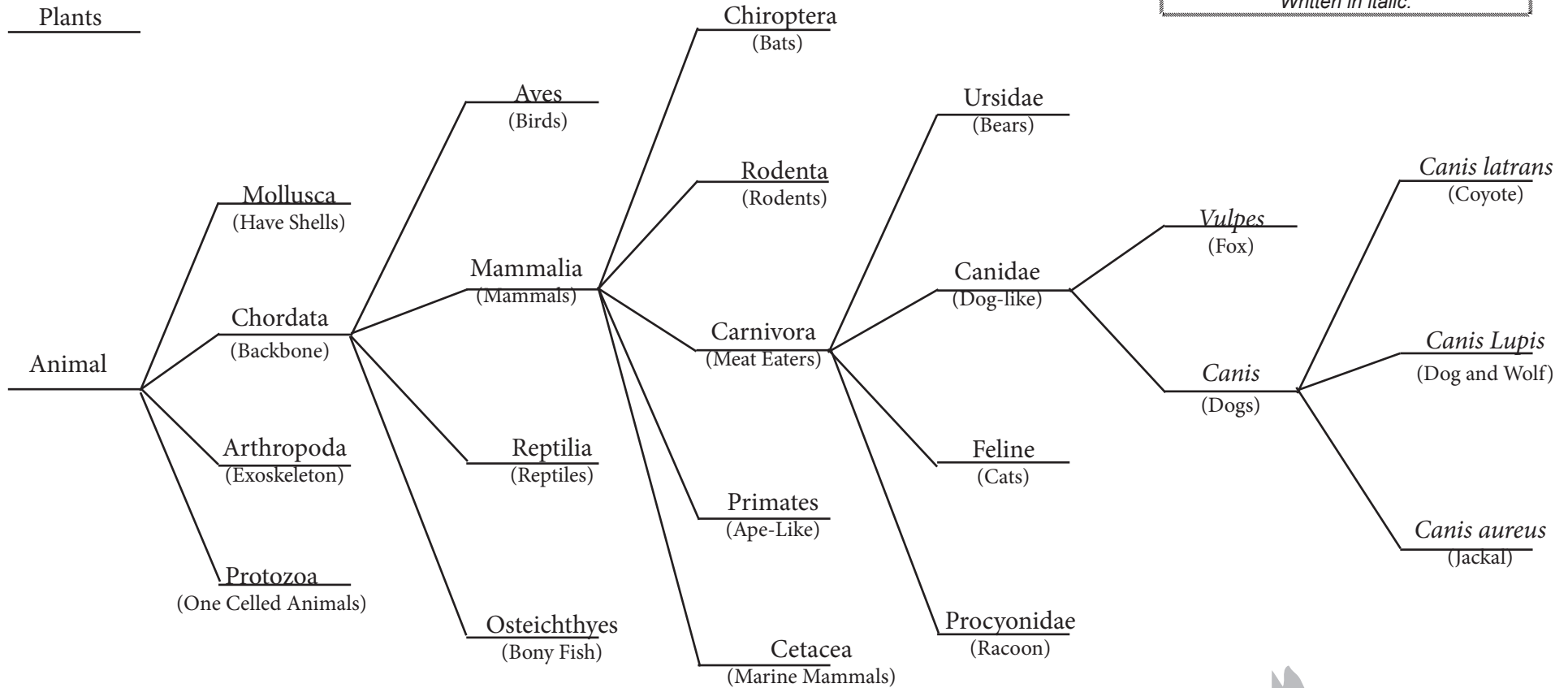
Only a few examples of each group are included due to space.



List the major groups used to classify plants and animals from the broadest to the most specific.



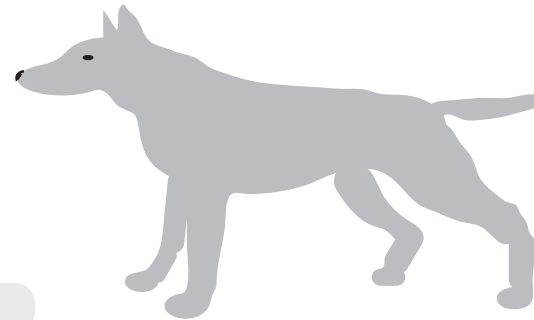
Used in the scientific name.
Written in *italics*.



Neumonic: King Phillip cried, "Oh, for goodness sakes."

Make a chart showing the kingdom, phylum, class, order, family, genus and species of three different animals or plants.

Only a few examples of each group are included due to space.



Zoology 8 Information Pieces

Kingdom Z-8	Animal Z-8
Phylum Z-8	Chordata Z-8
Class Z-8	Mammals Z-8
Order Z-8	Carnivora Z-8
Family Z-8	Canidae Z-8
Genus Z-8	<i>Canis</i> Z-8
Species Z-8	<i>Canis Lupis</i> Z-8

To Make Your **MatchCard** more durable:

1. Put the student MatchCard and instructor MatchCard back to back in a clear plastic page protector.
2. Laminate the information pieces. Or you can make them sturdier by covering the paper with transparent tape prior to cutting the pieces out.
3. For more ideas on how to use the MatchCards, and for keeping a notebook for review, see the Instructor's Guide.