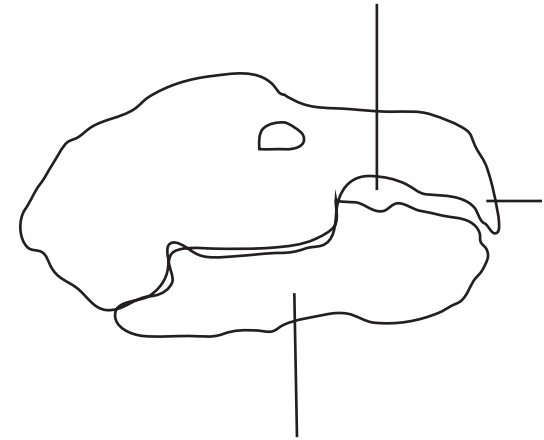
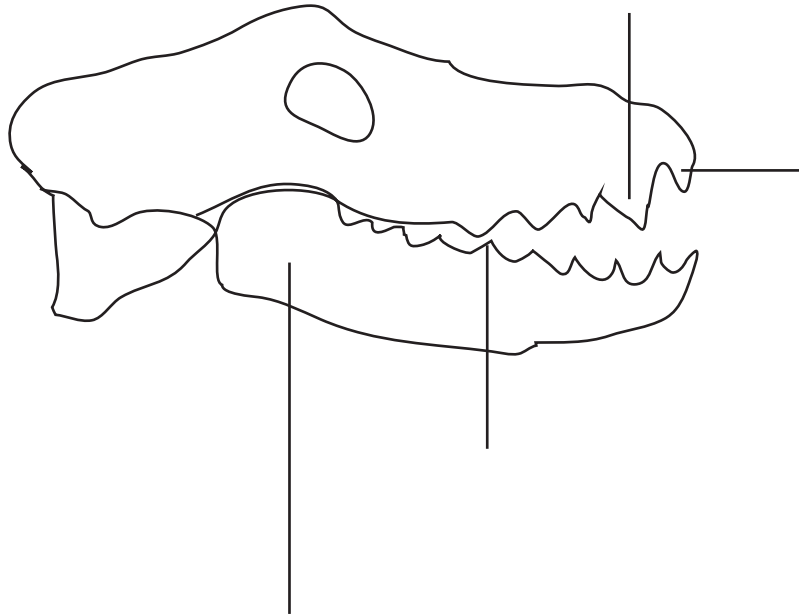
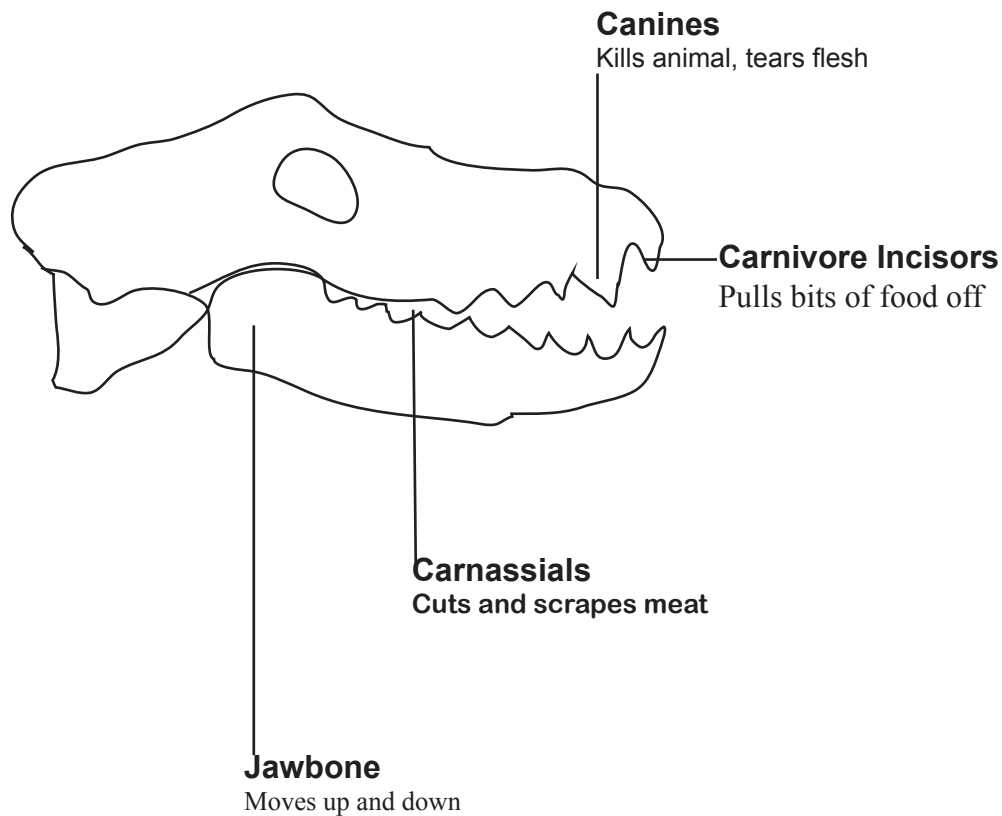


Describe the difference in the teeth of carnivores and herbivores.

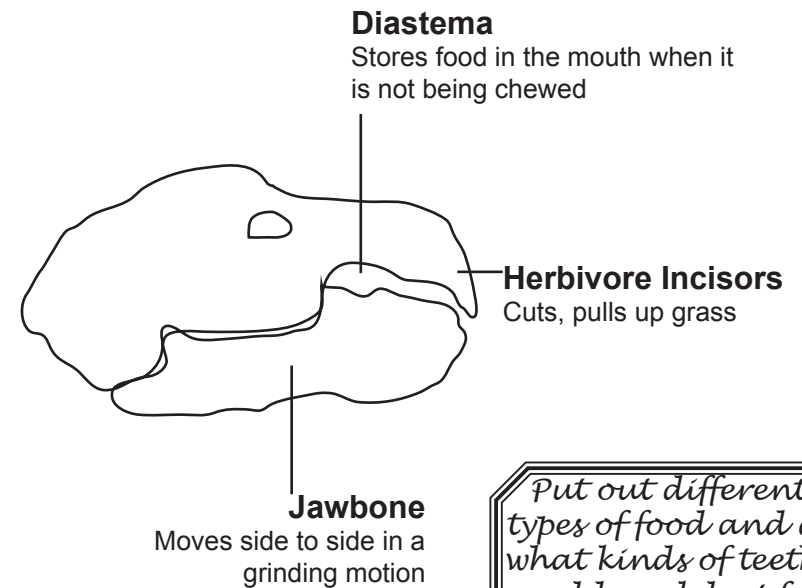


Describe the difference in the teeth of carnivores and herbivores.

CARNIVORE



HERBIVORE



Put out different types of food and ask what kinds of teeth would work best for animals eat it.

Look at the teeth of several animals to determine if the animal is a carnivore or herbivore. Check the teeth of animals at a pet store, farm show, or petting zoo.

Draw and label your own teeth.

Zoology 7 Information Pieces

HERBIVORE <small>Z-7</small>
CARNIVORE <small>Z-7</small>

Canines <small>Z-7</small>	Cuts and scrapes meat <small>Z-7</small>
Kills animal and tears flesh <small>Z-7</small>	Herbivore Incisors <small>Z-7</small>
Carnivore Incisors <small>Z-7</small>	Cuts and pulls up grass <small>Z-7</small>
Pulls bits of food off <small>Z-7</small>	Diastema <small>Z-7</small>
Jawbone <small>Z-7</small>	Stores food in the mouth when it is not being chewed <small>Z-7</small>
Moves up and down <small>Z-7</small>	Jawbone <small>Z-7</small>
Carnassials <small>Z-7</small>	Moves side to side in a grinding motion <small>Z-7</small>

To Make Your **MatchCard** more durable:

1. Put the student MatchCard and instructor MatchCard back to back in a clear plastic page protector.
2. Laminate the information pieces. Or you can make them sturdier by covering the paper with transparent tape prior to cutting the pieces out.
3. For more ideas on how to use the MatchCards, and for keeping a notebook for review, see the Instructor's Guide.